

Alloway State School



Prep Year Information Booklet for parents and caregivers



Early Childhood Philosophy Statement

We believe every child is unique in terms of life experience, developmental readiness, and cultural heritage. Partnership between family and school is, therefore, essential to the optimal growth and development of young children.

Our aim is to provide a safe, nurturing, stimulating environment that accommodates and embraces differences. Our goal is to promote the physical, social, emotional, and cognitive development of each child.

We believe in the integration of learning and play, as children learn best by doing. We strive for a balance between teacher-directed and child-initiated activities, providing the foundation of a developmentally appropriate early childhood program. Given opportunities to explore the world around them, young children become active, involved learners. School becomes a place where they can be successful and children discover that learning is fun.

We believe, with this foundation, children become curious, well rounded learners, able to make independent choices and act responsibly.

Goals of the Prep Program

The program is designed to help each child gain skills and attitudes, which will assist their development as a lifelong learner.

Each child will have the opportunity to develop by engaging in activities through real-life situations, investigations, routines and transitions and focused learning and teaching in a comfortable, safe, inclusive and flexible environment.

The activities presented come from the child's interests and past experiences, through participation they develop:

- *Self confidence*
- *Literacy and numeracy skills*
- *Friendships*
- *Co-operation and interactions skills*
- *Independence*
- *Responsibility*
- *Communication skills*
- *Thinking processes*
- *Gross and fine motor skills*
- *Health and safety awareness*
- *Cultural understandings*
- *Understanding of natural, built and technological environment*

An effective curriculum values each child's uniqueness. Understanding children and building partnership with parents and the community, optimises learning in the Preparatory setting.

Australian Curriculum

The Australian Curriculum sets out what all young people should be taught through the specification of curriculum content and the learning expected at points in their schooling through the specification of achievement standards. The current subjects of English, Mathematics, Science, HASS (humanities and social science) Health and Physical Education, and Technology will be taught and assessed using the Australian Curriculum Assessment and Reporting Framework. Parent teacher interviews are offered twice a year and report cards are issued at the end of semester one and two.



Increasingly, in a world where knowledge itself is constantly growing and evolving, students need to develop a set of skills, behaviours and dispositions, or general capabilities that apply across discipline content and equip them to be lifelong learners able to operate with confidence in a complex, information-rich, globalised world.

The Australian Curriculum includes a focus on seven general capabilities (literacy, numeracy, information and communication technology competence, critical and creative thinking, ethical behaviour, personal and social competence and intercultural understanding) and three cross-curriculum priorities (Aboriginal and Torres Strait Islander histories and cultures, Asia and Australia's engagement with Asia and Sustainability).

A continua of learning has been developed for each, to describe the relevant knowledge, understanding and skills at particular points of schooling. These have been embedded where relevant and appropriate in each learning area.

The Queensland Prep Year curriculum is taken from the Foundation Year of the Australian Curriculum.

The Australian Curriculum can be viewed in detail at - www.australiancurriculum.edu.au

Key Components of the Early Years Curriculum:

Curriculum decision-making involves teachers in **planning, interacting, monitoring and assessing**, and **reflecting** on each of the five key components of the Early Years Curriculum Guidelines.

- **Understanding Children:** building understandings about children's prior experiences and their learning and development in educational settings
- **Building Partnerships:** between children, families and carers, communities and professional colleagues
- **Establishing Flexible Learning Environments:** including physical, social and temporal environments
- **Creating Contexts for Learning and Development:** through play, real life situations, investigations, routines and transitions and focused learning and teaching
- **Exploring what Children Learn:** Social and personal learning, Health and physical learning, Language learning and communication, Early mathematical understandings, Active learning processes

Although these components are vital for early development, the focus is on the Australian Curriculum and assessing what our students know.

Introducing your child to Preparatory Year

Alloway Prep is an integral part of our school.

Postal Address: Alloway State School
4334 Goodwood Street
Bundaberg Qld 4670

Email: admin@allowayss.eq.edu.au

Web: www.allowayss.eq.edu.au

Telephone: 4159 7352

Mobile: 0475 964 175

Fax: 4159 7508



Or Like us on Facebook

School Routine: ***Monday to Friday***
9:00am school commences
11:00am to 11:45am first lunch break
1:15pm to 1:45pm second lunch break
3:00pm school concludes

As Alloway is an Education Queensland school there is no provision for supervision before school starts. Our duty of care does not commence until 8:30am each day. We are happy to assist in exceptional cases with prior arrangements.

If you are going away on holidays, or your child is ill, please let us know by telephone or a written note.

What to wear

Your child is to wear the complete school uniform. The wearing of hats which cover the neck and ears during play time is compulsory. Alloway is a Sun Smart school and has a “no hat, no play” policy which means children without a hat must remain under cover during play times.



School uniform: orange and blue school shirt, Royal blue shorts/skirt/skort, socks and closed-in shoes. **(Velcro preferred if your child can't tie laces.)** At Alloway shirts are required to be tucked in. Please practise this at home with your child.

Uniform shirts and hats (wide brimmed and legionnaire) are available for purchase from the P&C at the school.

Our P&C continually strives to provide a quality and affordable school uniform for all families. Second-hand uniforms are also available from time to time. Please enquire at the school office for all your uniform requirements.

Parent teacher communication

Please feel free to arrange a meeting at a mutually convenient time to discuss your child's development and progress. If there is something you are unsure of with our program which affects your child, please ask and we will happily explain it to you.

School Bus

A school bus service operates to and from Alloway School each day, by **South Bundy Buses**. Students are delivered right to the school gate in the morning and are supervised onto the bus after school each afternoon. For more information please contact:

- South Bundy Buses – Telephone: 4152 5880



Lunch Breaks

Each child needs to bring enough food for both first and second lunch breaks. At 10:00am students will break for a healthy snack - this should include fresh fruit and vegetables only. A bottle of water is also a good idea in your child's lunch box. Please monitor and adjust your child's lunches as needed. Fridges are available in all classrooms. Fridges are no longer in the classroom, so one or two ice bricks would ensure your child's lunches are kept cool.

Lost Property

Please label all items with your child's name. In the event that something is lost please check the lost property basket in the port racks. Encourage your child to put all items in their bag when they take them off - that way they will be able to find everything easily at tidy up and going home times.

Parents' Group - our P&C Association

You are invited to join the Alloway P&C Association and take part in a variety of school activities, such as: policy development, financial planning and budgeting, tuckshop management, fundraising activities, school and classroom functions.

Our P&C meets regularly (usually the third Monday of each month) at the school and everyone is welcome and encouraged to attend these meetings. Meeting dates are advised in our school newsletters.

Treasures from home

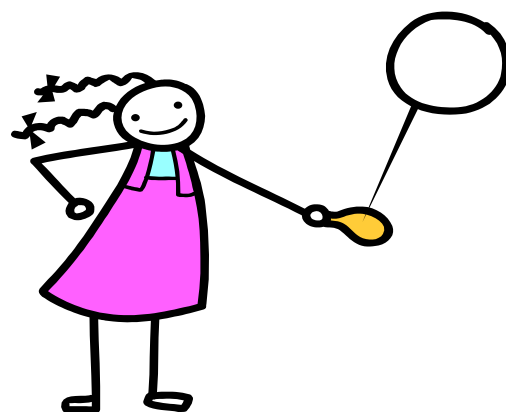
Toys brought from home can get damaged or lost, so it saves a lot of time and heartache if these are left at home. The same applies to jewellery and other trinkets. Special items can be brought along for Show and Tell in the classroom.

In conclusion

Our main aim is to provide a happy and stimulating educational environment in which children can achieve success and enjoy recognition for their individual achievements.

We encourage the children to take responsibility for themselves so that they develop ownership of their own behaviour and actions.

It is important to encourage the children to develop as individuals while respecting the rights of every child to be a unique person while learning to live within their environment.



Health Issues



Sick Children

Children with infectious diseases such as conjunctivitis or impetigo must be excluded from school for specified times. If your child or a sibling contracts German measles, whooping cough or any other serious, contagious disease, please inform us immediately. We have a number of students attending Alloway with serious childhood illnesses and it is essential that their parents are informed of any contagious illnesses within the school.

If your child has had a fever, been vomiting, had diarrhoea or been “off colour” 12 hours before coming to school, please keep him / her at home. Running noses and bad coughs easily spread infection. Parents are asked to be considerate of other families and staff by keeping their child at home until the infection clears. If the teacher believes your child is unwell on arrival or if there is a chance of cross infection, she may ask that your child be taken home. When a child becomes ill during the program, they will be taken to our first aide room and the parent or emergency contact person will be notified.

Accidents

In the event of an accident at school, parents will be advised at the end of the school day of a minor incident eg. graze or cut. If the accident requires further attention, parents will be contacted immediately. If necessary, the ambulance will be called and an adult will go with the child to the hospital. An “incident” register is held at the school to comply with Workplace Health and Safety Regulations.

Anaphylaxis

Anaphylaxis is a severe, potentially life threatening allergic reaction often triggered by insect stings or certain types of food, the most common being peanuts, tree nuts, seafood and/or egg and milk products. An anaphylactic shock episode is a medical emergency and must be treated immediately. Reaction symptoms may include hives, vomiting, drop in blood pressure, difficulty breathing, disorientation and even unconsciousness.

Where a student or staff member in your child’s sector of the school has a potentially life threatening allergic reaction, the school will inform you of this situation and steps that you can take to minimise the risks of exposure to allergens.

NB: It is essential that parents keep their contact numbers and the numbers of nominated emergency contacts up to date at all times. Please inform the office immediately if there is a change to any of your contact numbers.

Medication

Prescribed medicine can be given according to the doctor’s instructions if supplied in the original bottle. School staff cannot give any other medications. Parents/Caregivers must also complete the medication form so that medication can be administered. Medication must then be given directly to the staff and is not to be left in bags.

Immunisation

The school supports the recommendations that all children be up to date with immunisations, which help prevent serious diseases. Please review your child’s records before enrolling at school.

Headlice

This issue can be a problem throughout the year if all parents are not diligent. Head lice must be treated before children may return to school. Please notify your teacher if your child has head lice, so that other parents can be reminded to check their children’s hair. If your child has head lice it will be dealt with using the utmost of confidentiality. Keeping long hair tied back helps reduce the chance of becoming infected.

Impetigo (school sores)

This is a fairly common childhood disease that is highly contagious. If your child should contract ‘school sores’ you must exclude them from school until you have sought medical attention. The sores must be covered with a water tight dressing when they return to school.

Junk Collection

Your junk is our treasure! If you have any of the following items at home that you no longer need, please bring them along.

Painting and Drawing

- ❖ Paper and cardboard of any sort (whether blank on the back or not) is always welcomed at Prep.

Drama Areas

- ❖ Hats, wigs, shoes, old jewellery, hand bags, wallets, dress-up clothes, plastic wares (cups, bowls etc)

Collage Materials

- empty boxes
- buttons, beads, lace, ribbon
- streamers, pipe cleaners, feathers
- patty papers, foil, wrapping paper
- stamps, cotton reels
- cellophane, confetti, tinsel
- shells, pasta
- egg cartons, computer paper
- material scraps
- magazines, used cards.

Outdoors

- soft wood for carpentry
- plastic tubing and hosing
- large crates.

Also

- cleaned plastic containers
- cleaned squirt bottles.

No toilet rolls
please!!!!

Workplace Health
and Safety
directive.

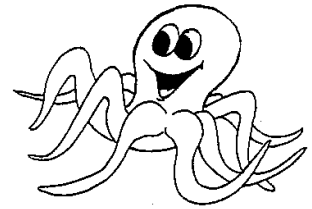
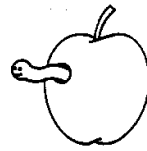
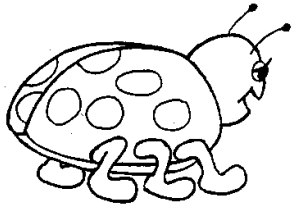
PLEASE SEND IN ANYTHING ELSE YOU THINK WE MAY BE ABLE TO USE.

THANK YOU!

Children are strong, rich and capable. All children have preparedness, potential, curiosity and interest in constructing their learning and negotiating with everything their environment brings to them.

(Gandini, 1993)





A B C D E F G H I J K L M

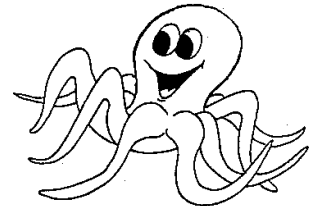
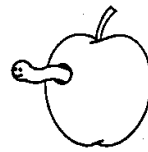
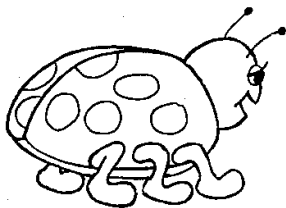
N O P Q R S T U V W X Y Z

a b c d e f g h i j k l m n o p q r

s t u v w x y z



1 2 3 4 5 6 7 8 9 10



A B C D E F G H I J K L M

N O P Q R S T U V W X Y Z

a b c d e f g h i j k l m n o p q r

s t u v w x y z



1 2 3 4 5 6 7 8 9 10

